

# M8 VERTIDRIVE



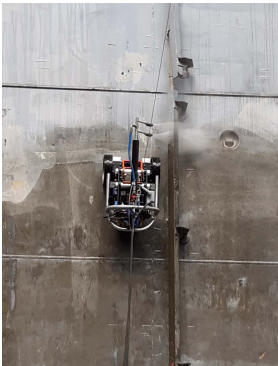
CONSISTENT HIGH  
QUALITY CLEANING



WORKS ON STEEL  
SURFACES IN ALL  
ORIENTATIONS



REDUCES WORKING  
AT HEIGHT TO A MINIMUM



Cargo Holds of dry/liquid bulk carriers require a certain degree of cleaning when changing cargo. Such cleaning is a time consuming and at times hazardous task for the crew, which can be performed mainly while in port. The risk of not being sufficiently clean can be excessive, so a consistently high cleaning quality is necessary when i.e. grain clean is required. By cleaning the majority of the cargo hold with a magnetic crawler, you can reduce the cleaning time, increase safety, reduce risk and clean while in open water.

VertiDrive, in close cooperation with partners from the field, has worked relentlessly over the past years towards a new solution called the VertiDrive M8 Cargo Hold Cleaner. The robot is packed with the latest VertiDrive innovations, yet designed and tested to operate in the most demanding environments. The controls are designed to be intuitive for operation by a crew not necessarily experienced to work with (semi-) automated equipment.

VertiDrive is world's leading manufacturer of magnetic robotic crawlers for heavy duty applications. We have put our years of experience into the development of the VertiDrive M8 Cargo Hold Cleaner, which we can safely say is our most advanced model today. We are convinced this crawler will disrupt the way cargo hold cleaning is performed.

# ADVANTAGES OF THE VERTIDRIVE M8 CARGO HOLD CLEANER

**SAFER** Reduce working at height to clean your cargo hold

**SUSTAINABLE** Efficient use of potable water means less water and less detergents

**CONSISTENT QUALITY**  
Integrated automated washing programs

**WHENEVER, WHEREVER**  
Clean your cargo hold anywhere, anytime, even in transit between ports

**CONVENIENT** Operator stays safely on the ground, with intuitive control over the robot

## THE NEW STATE OF THE ART CARGO HOLD CLEANING SOLUTION

### GENERAL

<b>Cleaning width</b>	1,200 mm <small>1724 in</small>
<b>Dimensions</b>	1,200 x 640 x 640 mm <small>47.24 x 25.19 x 25.19 in</small>
<b>Total Weight</b>	75 kg, divisible in two sections of 36 / 39kg for ease of transportation 165 lbs (79 / 86 lbs)

### AUXILIARIES

<b>Control box</b>	300 x 210 x 400 mm, stainless steel <small>11-13/16 x 8-3/4 x 15-3/4 in</small>
<b>Remote Control</b>	Range of operation 100 meter in standard (434Mhz) set-up <small>318ft</small>
<b>Power/Control cable</b>	50 meter <small>164ft</small>
<b>Load arresters</b>	2 pcs, with descender functionality
<b>Pump connection</b>	Included for most common pumps, ON/OFF and emergency stop
<b>Wall Contact Switch</b>	Included, for emergency shutdown should crawler lose contact

### OPERATION LIMITS

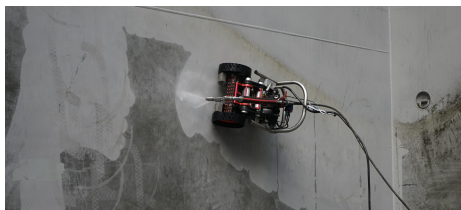
<b>Crawler payload</b>	1,500 N <small>337 lbf</small>
<b>Temp. limits</b>	+3 ~ +45 °C <small>37 ~ +113 °F</small>
<b>Curvature</b>	Internal radius 4 meter – external radius 6 meter
<b>Angle between planes</b>	Internal 120 degrees – external 240 degrees
<b>Contamination</b>	All common bulk products, i.e. pet cokes, coal, cement, grain, oil products
<b>Chemicals</b>	Resistant to most common detergents, i.e. alkaline and acids

### HIGH PRESSURE WATER SUPPLY

<b>Max. pressure</b>	500 bar <small>7,250 psi</small>
<b>Max. flow</b>	20 l/min - increased flow available upon request <small>5.3 gal/min</small>
<b>Max. temperature</b>	90 °C <small>194 °F</small>

### POWER SUPPLY

<b>Required power supply</b>	220 – 240V / 50Hz (1Ph + N), 16Amp <small>alternative power supplies available upon request</small>
<b>Standard power plug</b>	Schuko (CEE 7/4)



### EASY TO (DIS)ASSEMBLE

#### TRANSPORTABLE BY HUMAN OPERATOR

The VertiDrive M8 is (dis)mountable in under 1 minute. This allows for ease of transportation on board by human operators.

Both the disassembled M8 crawler as well as the control cable and control box are designed to be hand carried by a human operator and without crane assistance.